



IpPowerSE

Network Monitoring and Control Software
Manual for SNMP Card Lite

Content

1. Introduction	5
1.1 Brief introduction	5
1.2 Function	6
1.3 System Request	7
1.4 Operating Systems Supported:	7
2. Install, start, exit and uninstall the software	8
2.1 Installation	8
2.2 Start	8
2.2.1 To start the user interface of the IP Power SE software	8
2.3 Exit	10
3. User's main interface	10
3.1 Menu	10
3.1.1 "system" menu	10
3.1.2 "Device management" Menu	11
3.1.3 "View" menu	11
3.1.4 "Control" menu	11
3.1.5 "Record" Menu	11
3.1.6 "Help" Menu	11
3.2 Toolbar	12
3.3 Navigator tree	12
3.4 Main window	12
3.5 Warning	12
4. Device monitoring	12
4.1 Add area	12
4.2 Add device	13
5. "System setting" menu	14
5.1 System Setting	19
5.1.1 Basic setting	19
5.1.2 Beep-Pager	19
5.1.3 SMS	20
5.1.4 E-mail	21
5.1.5 Warning definition	22
5.2 Crisis management	23
5.2.1 Client side crisis management	24
5.2.2 Server crisis management	24
5.3 Data backup	25
5.4 Recover Data	26
5.5 Log out	26
5.6 Modify password	27
5.7 Exit	27
6. "Device management" Menu	27
7. "View" Menu	29
8. "Control" Menu	29
8.1 Control/Test	29
8.2 Turn on/turn off	29

9. “Record” Menu.....	29
10. “Help” Menu.....	32

1. Introduction

1.1 Brief introduction

IpPowerSE software has been developed for monitoring and control of Uninterruptible Power Supplies (UPS). It can monitor several UPS in the network at the same time. It can display the status of the UPS and Utility (input/output voltage, frequency, load, temperature and battery capacity) with graphics and text and help users to monitor the quality of Utility power. Moreover, it can remotely monitor the UPS via the network, enabling users to manage their system more effectively without spatial limits. Upon Utility failure or UPS battery low, IpPowerSE takes all necessary actions without intervention from the system administrator. In addition to automatic file saving, executing external shutdown program and system shut-down functions, IpPowerSE can also send warning messages via sound, e-mail, SMS etc., thereby preventing file damage and takes any necessary actions if power is suddenly turned off. In addition, IpPowerSE has the function of event history log, with users being able to examine and clear the historical event log according to their user demands.

Because IpPowerSE runs in Windows Service, it may be configured to start at system power-up, even if the users have not logged on. It also supports multiple languages. Users can choose their most familiar language for configuration and other operations.

Nowadays, information is more and more important whether it be on personal computers or servers. In this context automatic power supply monitoring is essential to the effective deployment of a UPS. In offering comprehensive monitoring and control features IpPowerSE provides the best possible UPS support available.

1.2 Function

IP Power SE is mainly used for remote centralized monitoring of SNMP Lite (NML) network card real time status. It also provides 7 modes for sending warnings.

- 1, Intuitive and clear display of diversified parameters' real time status information, such as voltage, frequency, load and battery of UPS in data and graphics, helping users to know status of currently electric power.
- 2, Centralized monitor combined devices, such as multiple single-phase UPS SNMP Lite network cards, temperature and humidity module, entrance guard, smoke sensor etc.
- 3, Auto detect UPS power supply, battery, bypass and self-test operation status.
- 4, Running as system background service. Execute the program before the user logs in to the system and realizes monitoring and administration of the UPS automatically.
- 5, Pop out alarm message to inform the user and the administrator of the power failure information.
- 6, Pop out alarm message to inform the user and the administrator of the UPS running status change information.
- 7, Play multimedia voice alarm to inform the user and the administrator of the power failure information.
- 8, Play multimedia voice alarm to inform the user and the administrator of the UPS running status change information.
- 9, Sending NT Messenger alarm to every computer in the LAN that has started NT Messenger broadcast service.
- 10, Auto send alarm message via Email.
- 11, Auto send alarm message via BP-call.
- 12, Auto send alarm message via GSM SMS.
- 13, Auto dial the appointed telephone by voice modem and play corresponding voice alarm.
- 14, Record all the UPS running status event history and all the parameters history data, for inquiry and power issue analysis. The user and administrator can assess the power supply situation and UPS running trend, for a better planning of the power usage strategy and to avoid power crisis.
- 15, Strict test passed and proven to have excellent, reliable and stable qualities.
- 16, User Friendly operational interface. Provides detailed help system. Convenient for setting and using.
- 17, Powerful data analysis platform and convenient for users to make history data statistics and history event analysis. The running history data can be displayed clearly with graphics.
- 18, Multi-user management and monitoring platform supported. Users with different authorization can be selected through "Advanced user".

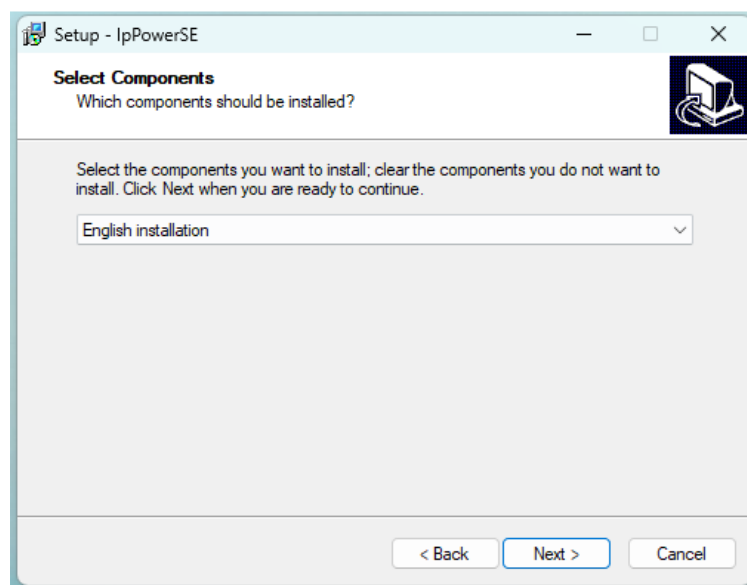
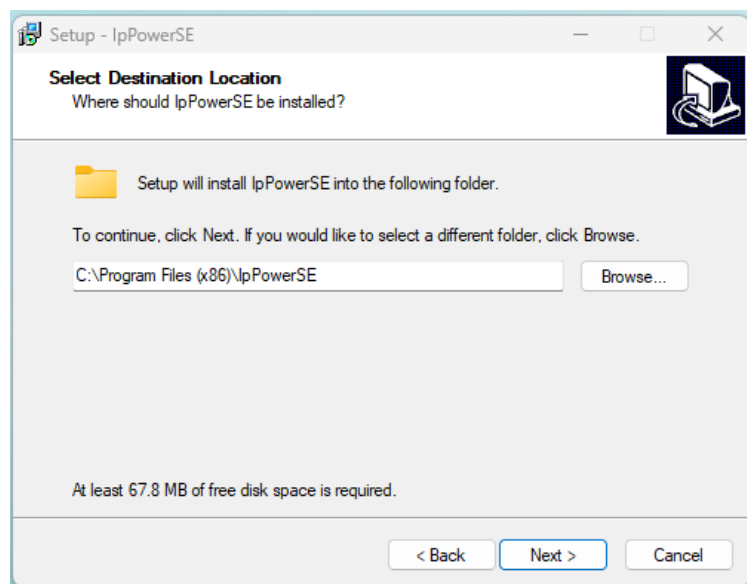
1.3 System Requirements:

MS-Windows 7 or above operating system

2.Install, start, exit and uninstall the software

2.1 Installation

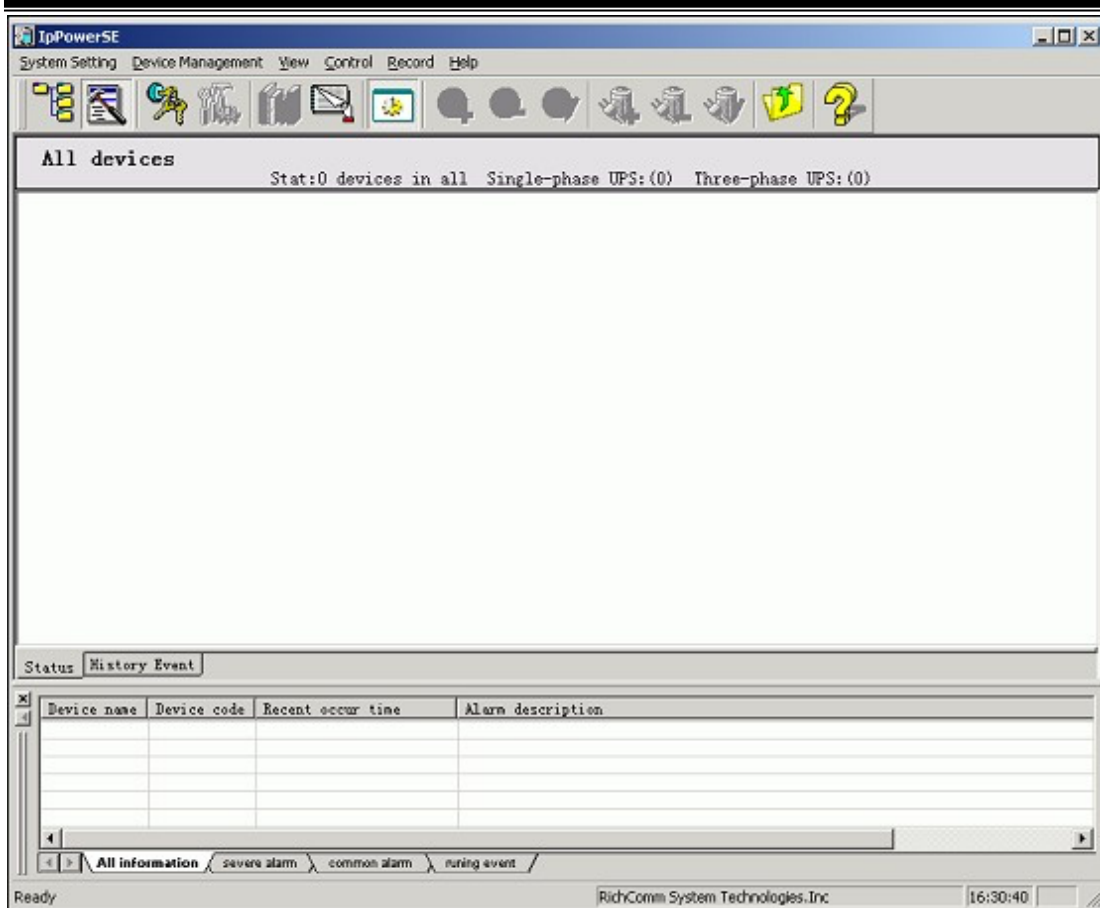
Download and install IpPowerSE. During the installation, simply choose the install directory and language type, then follow all the default prompts.



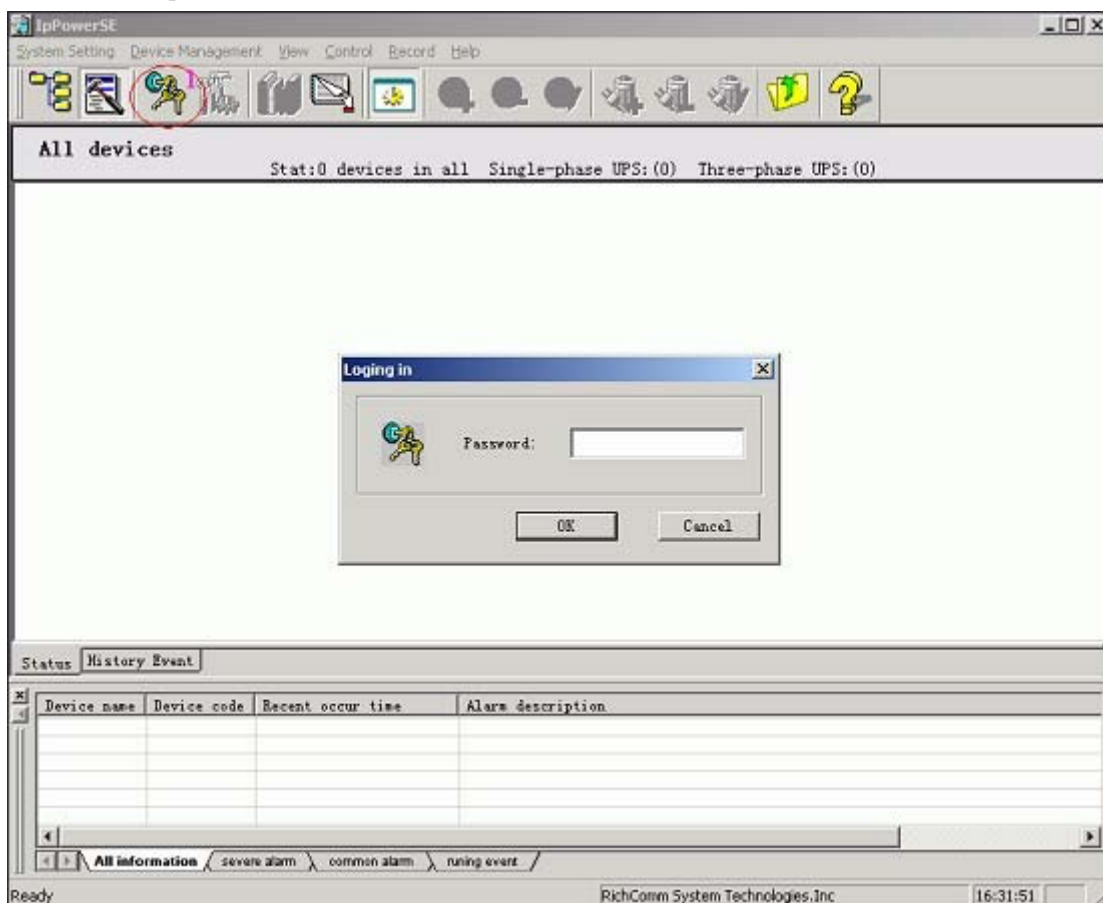
2.2 Start

2.2.1 To start the user interface of the IP Power SE software

The program will inquire if you want to start the IP Power SE immediately after the installation. IP Power SE status interface can also be started through “Start”—“Program”—“IpPowerSE”. On startup, IpPowerSE defaults to authorized device monitoring without the Login rights for setting up.



For the first installation please press the shortcut “keys” button marked “1” in the chart below to logging in before you are authorized to add and modify any device. IP Power SE defaults to have a vacant password.

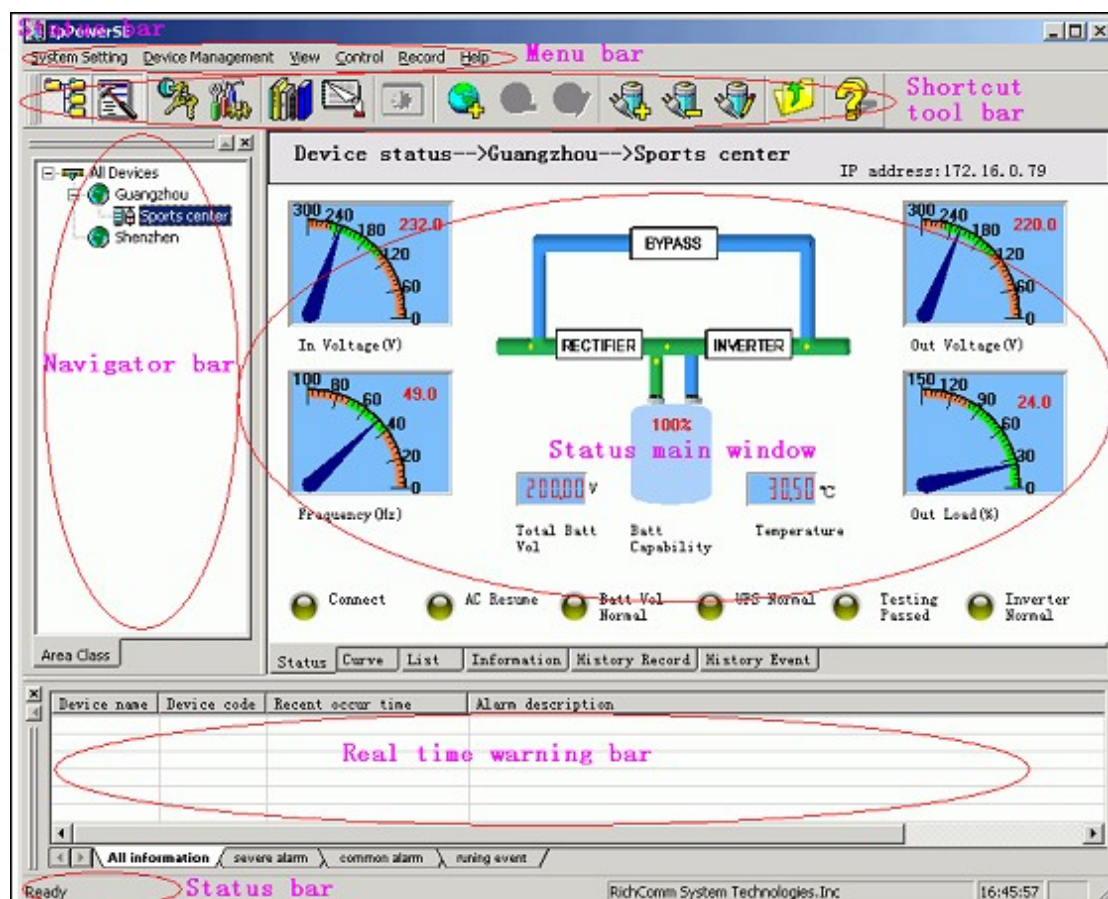


2.3 Exit

Press the close button in the top right corner of the window is to exit UI, while the service is not quitted. For logging out of the service the customer may press the icon of tray in the lower rightcorner of the system. Choose “Exit” in the menu to log out IP Power SE program.

3. User’s main interface

IpPowerSE user’s main interface includes 6 zones : menu, tool, navigator, main window, information and status , as below:

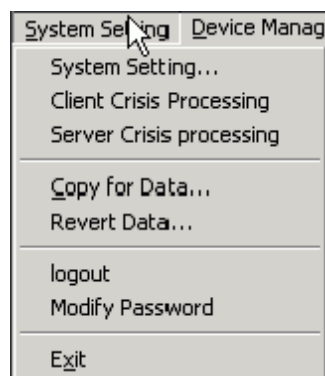


3.1 Menu

The menu lists all the functions of the IPPower SE software, including: system, view, manage, control, record and help.

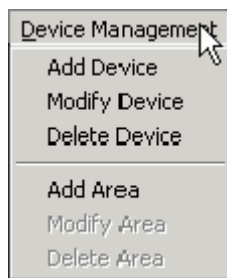
3.1.1 “system” menu

System setting menu is as below, including 8 options as system setting, customer end crisis management, server crisis management, backup data, resume data, logout, modify password and exit.



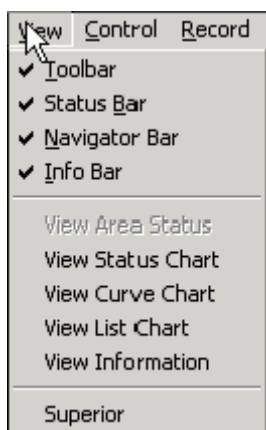
3.1.2 “Device management” Menu

Device management Menu is as below, including 6 options: add device, modify device, delete device, add area, modify area and delete area.



3.1.3 “View” menu

“View” menu is as below, including 3 options: tool, authorize and manage.



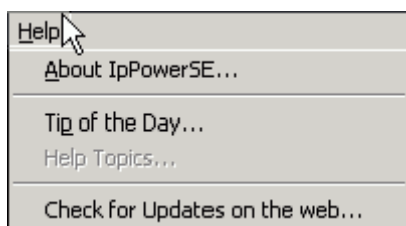
3.1.4 “Control” menu

Two options included in the control menu: Test and turn on/turn off.



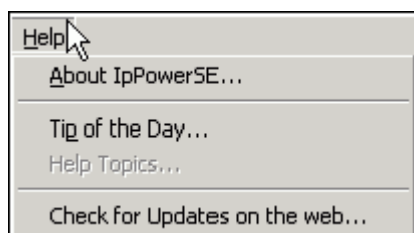
3.1.5 “Record” Menu

The “Record” Menu includes three options as below: history data, event history and system



3.1.6 “Help” Menu

The “Help” Menu includes four options as below: “About IPPower SE”, “Tips for today”, “System help” and “View and renew”.



3.2 Toolbar

The toolbar lists the most frequently used shortcut buttons in IpPower SE, including Navigator, Information, Log in, System config, Event history, History record, Area status display, Add area, Delete Area, Modify Area, Add device, Delete device, Modify device, Previous and Help.



3.3 Navigator tree

For prompt device inquiry and display.

3.4 Main window

Displaying the running status of the selected device.

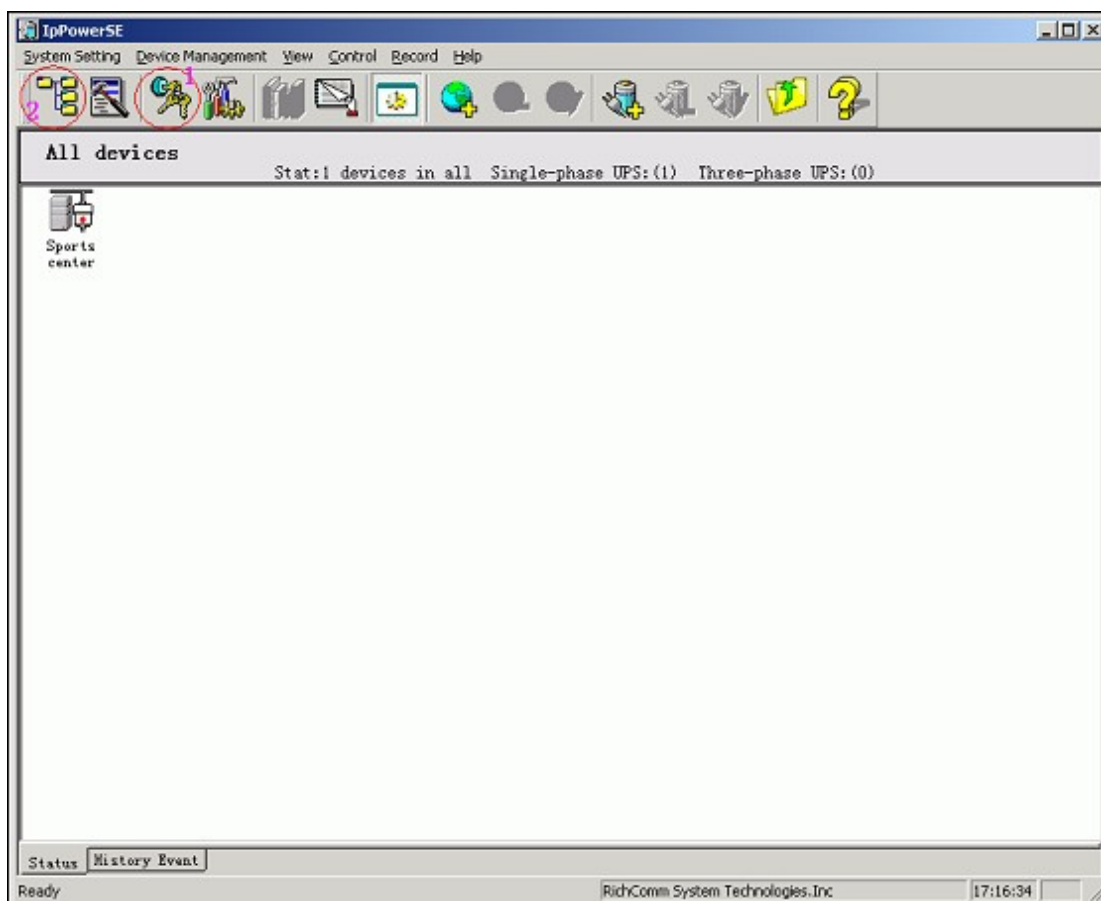
3.5 Warning

To display the device that is sending alarm. The device alarm message in the Warning bar will be auto cancelled after the cancellation of the alarm in the device.

4. Device monitoring

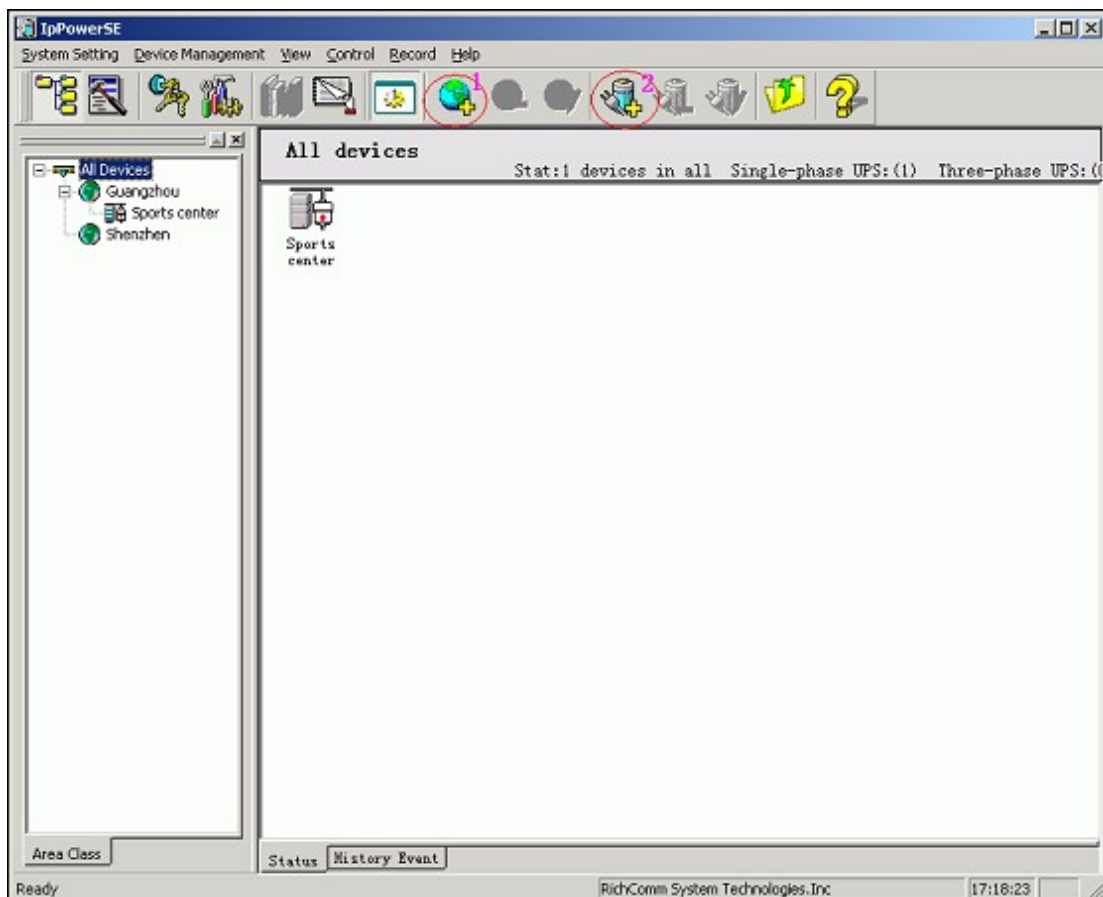
In the following there will be a guide for monitoring a device with the IpPowerSE software.

If the IP Power SE software is newly installed, after the user starts the software and successfully logs in, the user's main interface will be as below:

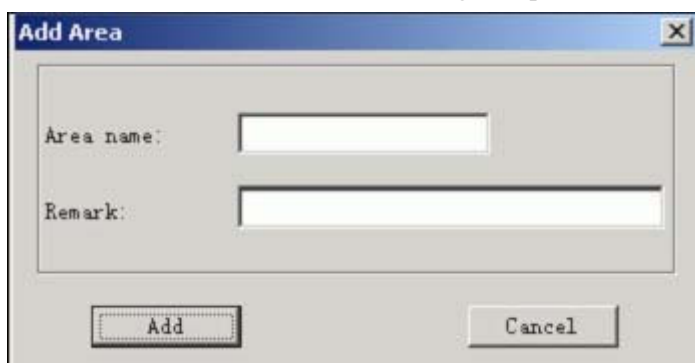


4.1 Add area

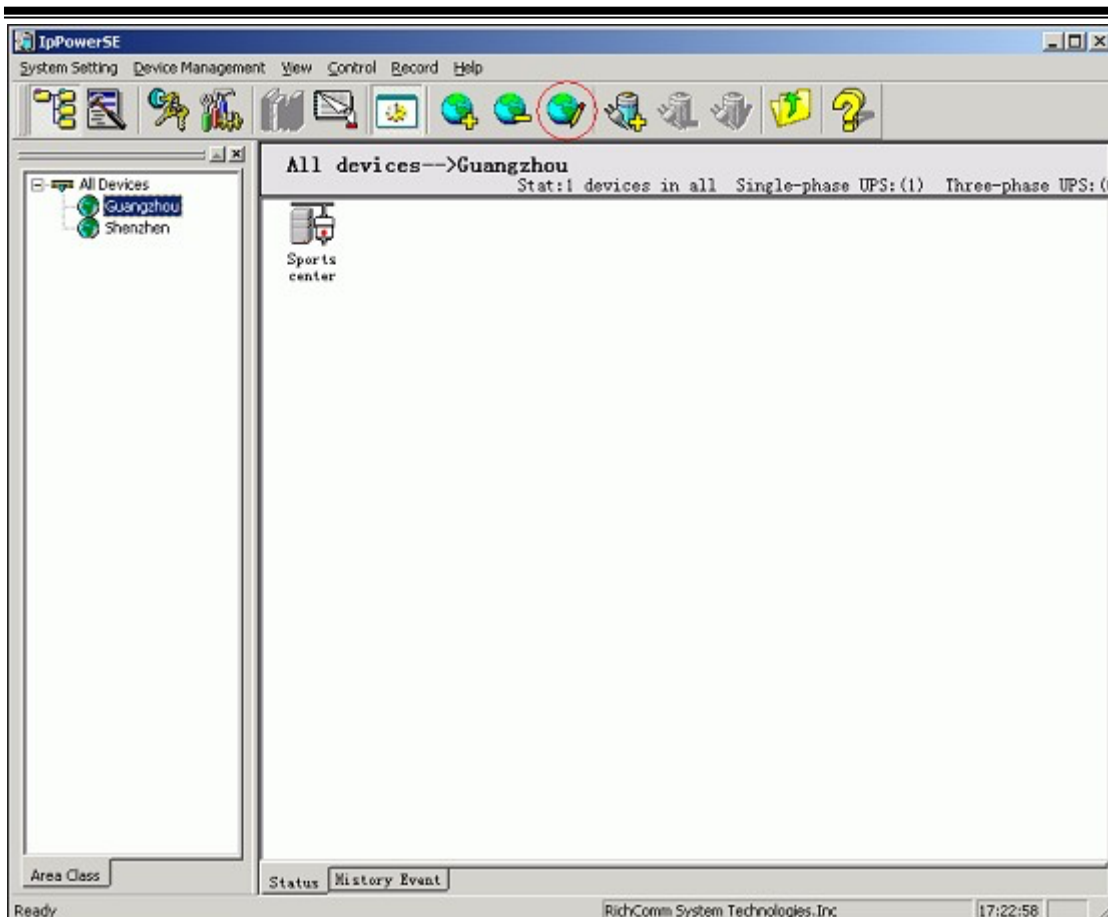
Press the shortcut button marked 1 in the above page. Enter the administration page. If the user hasn't logged in IpPowerSE, only the "View" function can be active without management, configuration and control functions. Press the button marked 2 to display the Navigator tree. The interface is shown below:



Press the button marked 1 shown in the above page to divide the area. If there is little device data to be divided or no need for dividing area press button 2 to add device directly. The Add Area is shown below:



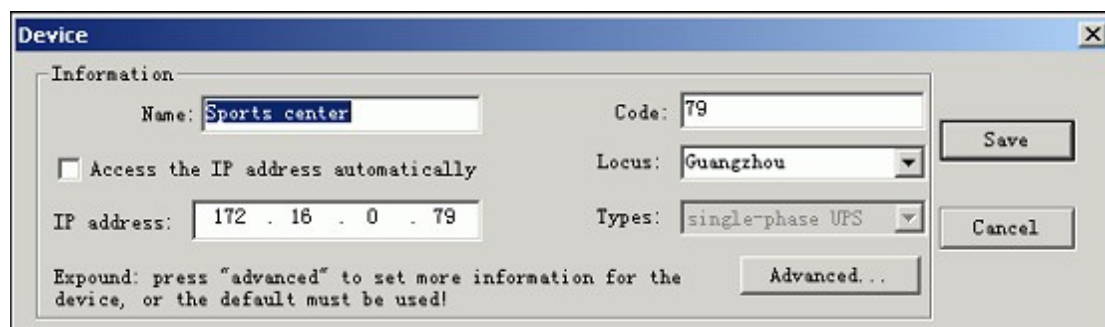
Input "Area Name" and "Remark" and then press the "Add" button below. The area adding will be finished as below:



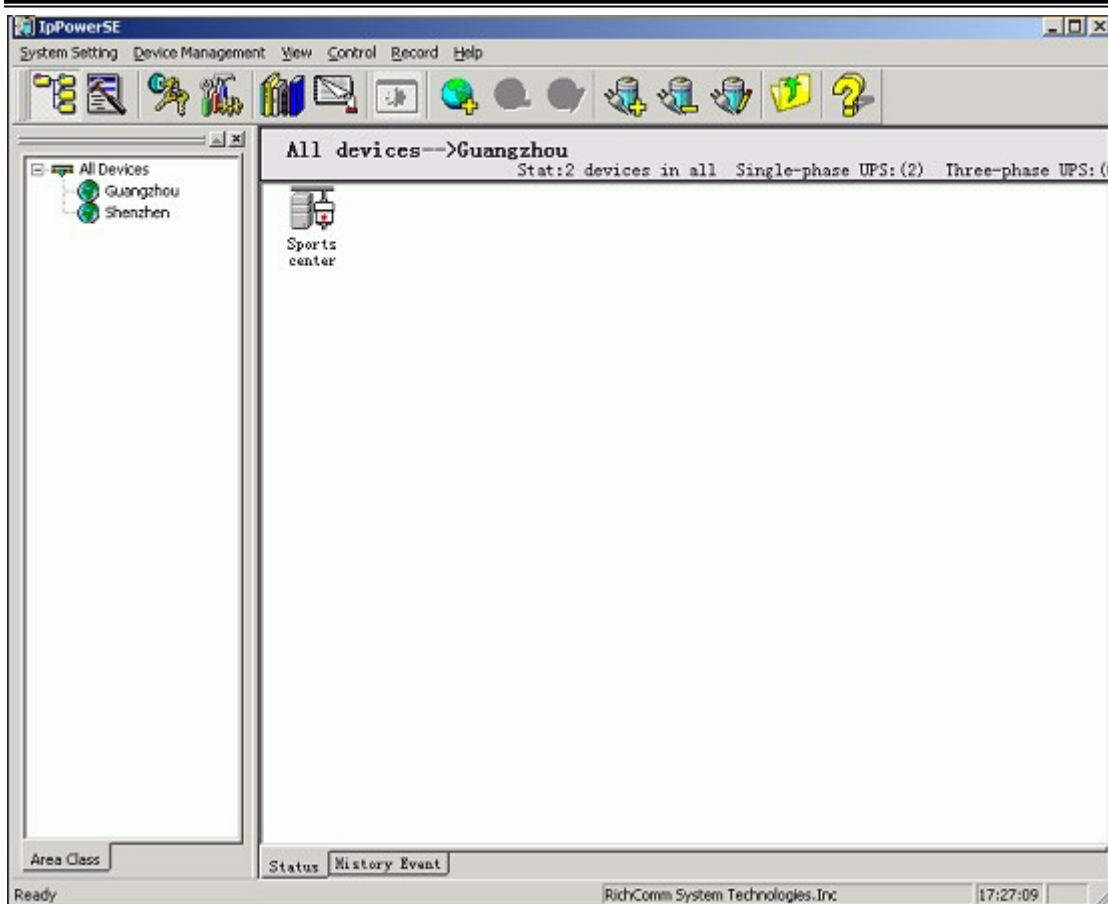
For modifying the area name or the remark for the second time, select the area to be modified in the navigator and press “Modify Area”.

4.2 Add device

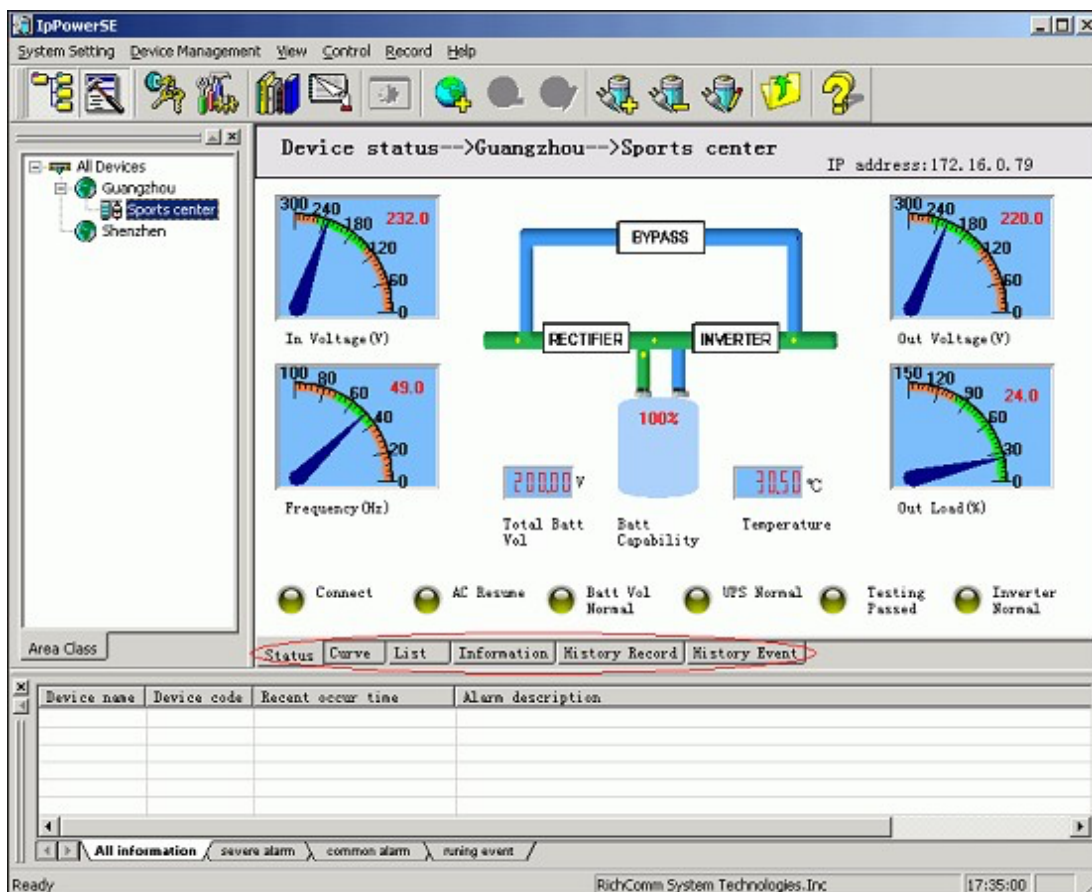
Select the navigator, press “Add Device” in the toolbar and add the device to be monitored. As below:



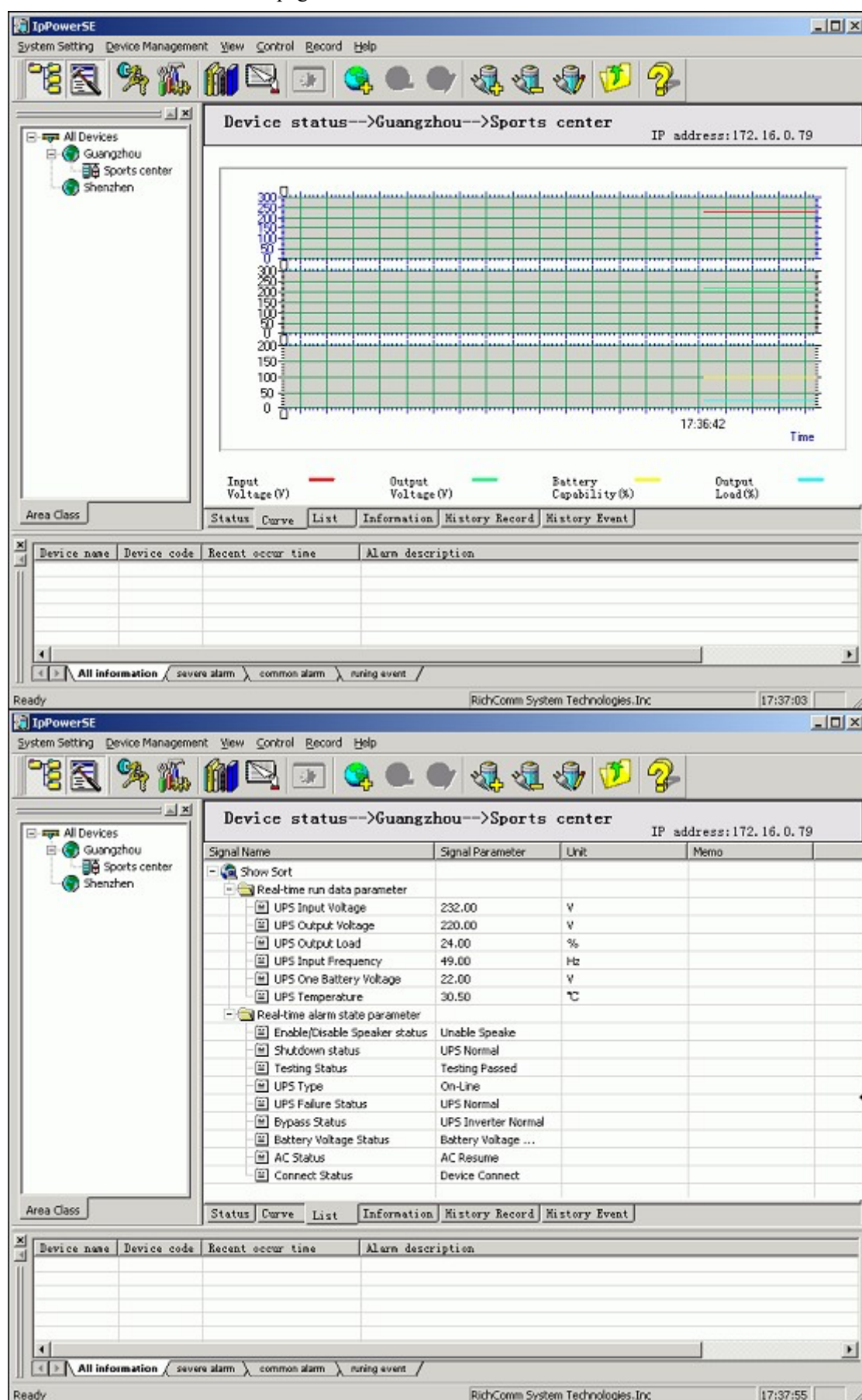
Input device “Name”, “Number” and “IP Address” and then select the type for the device to be monitored. The device type must be accordant to the one with NetmatelI. For adding more information please press “Advance” to enter the advanced configuration page.



Choose a certain device in the navigator and press the right button in the mouse. Choose the “Device Status” and the main window will display the status graphic of the current device, as below:



There are five different device pages in the main window :



IpPowerSE System Setting Device Management View Control Record Help

Device status-->Guangzhou-->Sports center IP address:172.16.0.79

Manufacturer Information

Manufacturer: richcomm
Version: Version1.0
Model: UPS 5K-11A

Device information

Name: Sports center Code: 79
Locus: Guangzhou Types: single-phase V
IP address: 172.16.0.79 Verify code: RICHCOMM
Interval for saving the history data: 10 minut Request data Every 20 secs
Remaining time for discharge less than 20 % Battery maintenance 2 hour
Dispark: yes COM PORT COM: T001
MAC address: 00-AA-5A-80-00-79
Remark:

Rating Information

Voltage: 220.0 V
Current: 100 A
Battery voltage: 02.55 V
Frequency: 50.0 Hz

Area Class Status Curve List Information History Record History Event

Device name	Device code	Recent occur time	Alarm description

All information severe alarm common alarm running event

Ready RichComm System Technologies Inc. 17:38:29

IpPowerSE System Setting Device Management View Control Record Help

History record-->Guangzhou-->Sports center (Current 1/1 Page 6 records in total)

Data: 2005-10-5 -- 2005-11-4 Filter...

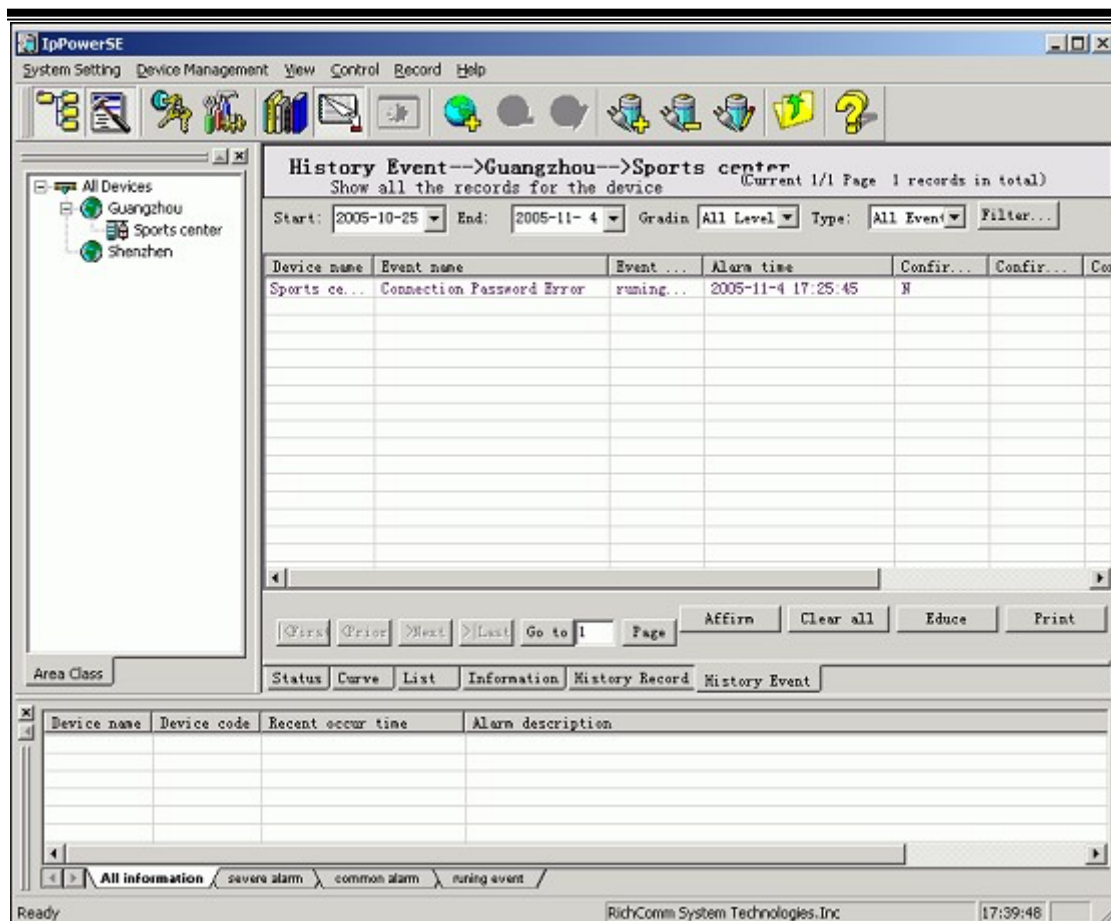
Record time	Device name	UPS Input V...	UPS Output ...	UPS Output ...	UPS Input F...
2005-11-4 17:30:36	Sports center	232.00	220.00	24.00	49.00
2005-11-4 17:20:36	Sports center	232.00	220.00	24.00	49.00
2005-11-4 17:10:36	Sports center	232.00	220.00	24.00	49.00
2005-11-4 17:00:36	Sports center	232.00	220.00	24.00	49.00
2005-11-4 16:50:36	Sports center	232.00	220.00	24.00	49.00
2005-11-4 16:40:36	Sports center	232.00	220.00	24.00	49.00

Area Class Status Curve List Information History Record History Event

Device name	Device code	Recent occur time	Alarm description

All information severe alarm common alarm running event

Ready RichComm System Technologies Inc. 17:38:54

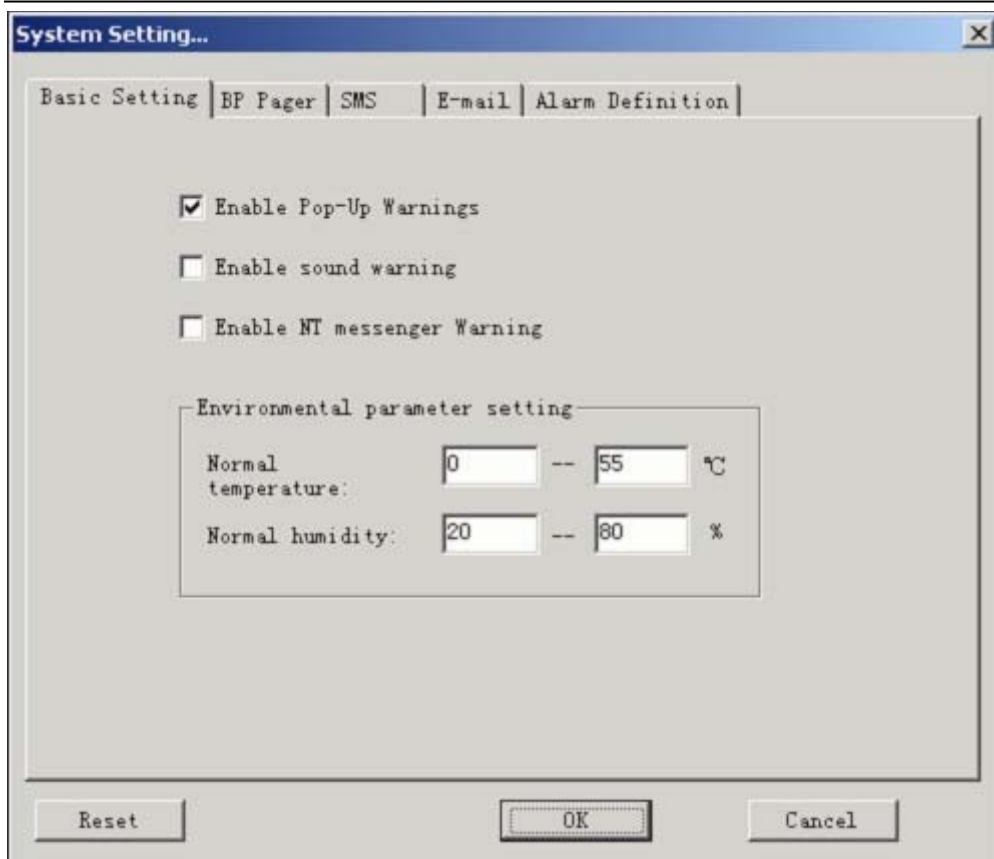


5、“System setting”menu

5.1 System Setting

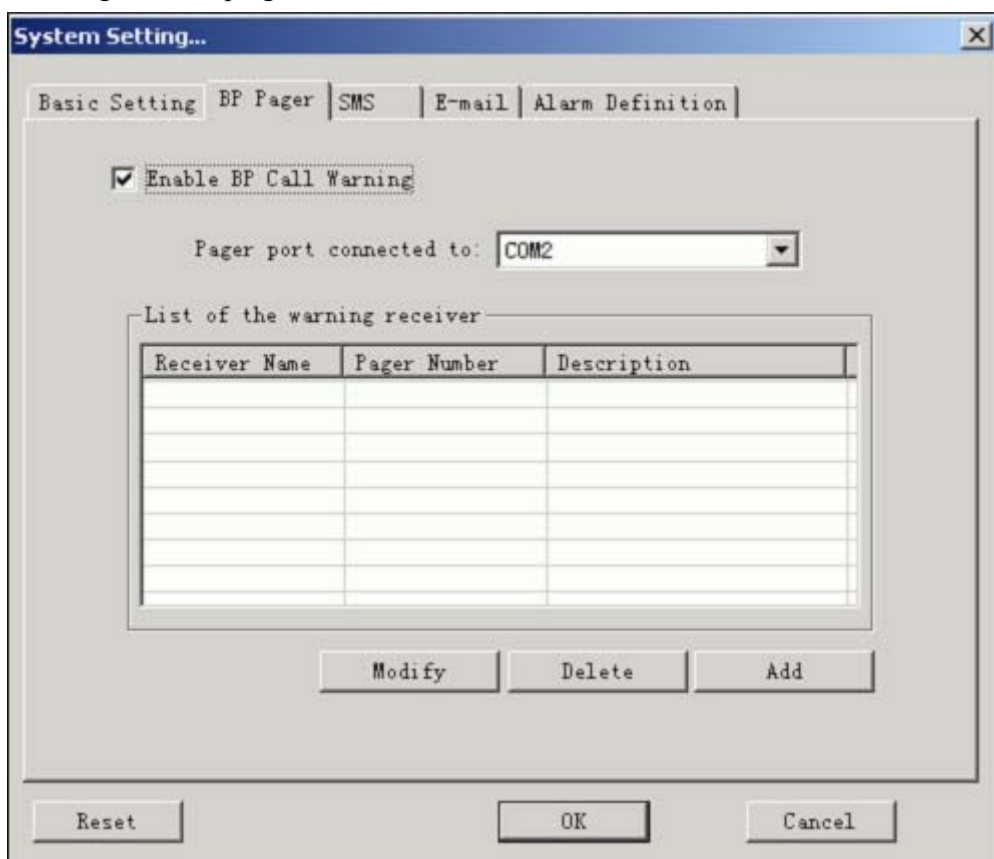
5.1.1 Basic setting.

It defaults to activate the “pop-out” warning, Voice warning and Messenger warning. An external sound box is required for the Voice warning. The “Environment parameter setting” is the value for sending the device temperature and humidity warning. When the temperature and humidity module detects a value out of the selected range, the IpPowerSE will send a warning out.



5.1.2 Beep-Pager.

It defaults to be shut down. If the user choose to use the BP Warning function please select this function. If not, please do not activate this function to engross the serial port thus infects the other ports' function. The Beep-pager can be directly insert into the serial port of the computer without installing the drive program.



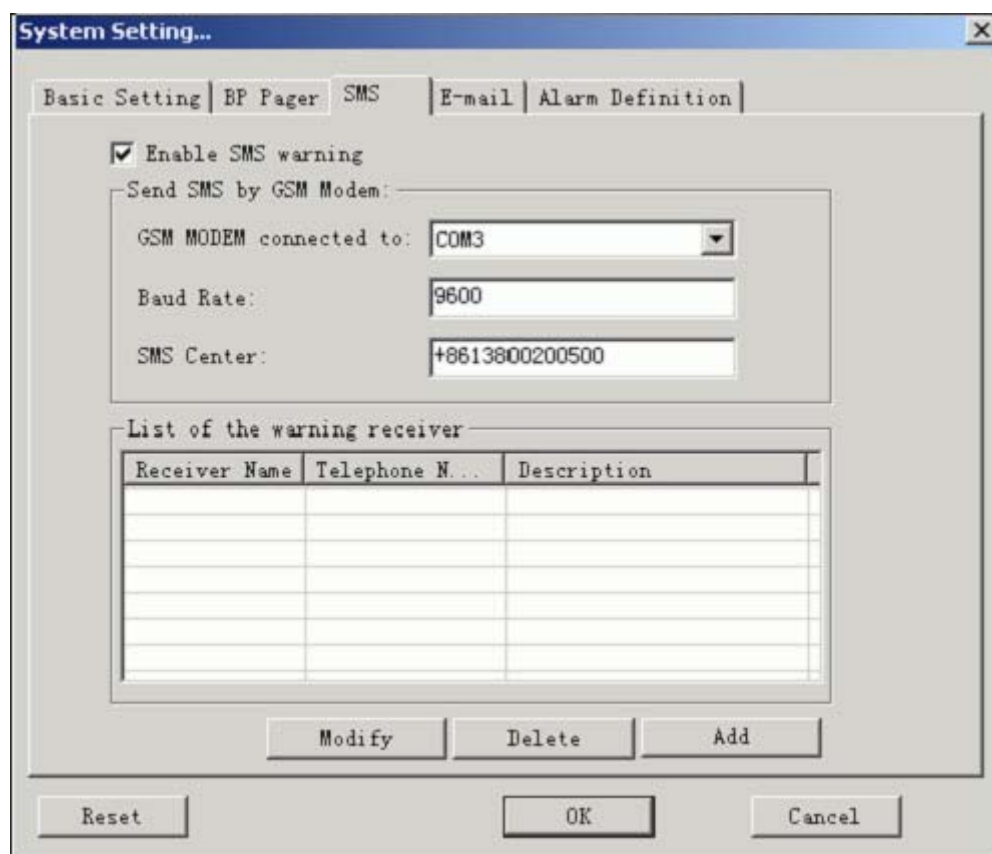
To add the BP Warning Receiver, please press the “Add” button shown on the above page, input the Receiver name and BP number. After the adding users can choose to “Modify” or “Delete” the added receivers.



A dialog box titled "Add warning receiver" with a close button (X) in the top right corner. It contains three input fields: "Receiver name:" with the text "Manager", "Pager number:" with the text "02082329896", and "Description:" with the text "ring!". At the bottom, there are two buttons: "OK" and "Cancel".

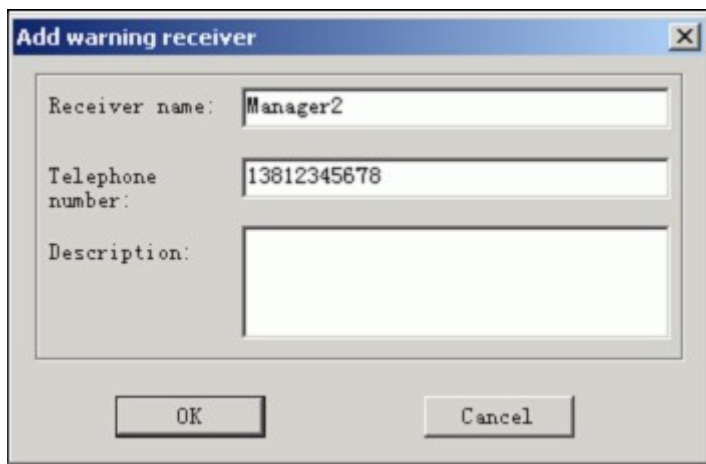
5.1.3 SMS.

The SMS Warning uses GSM Modem. To select this function please activate it. Select “input Modem serial port” for the connecting port. The Baud Rate depends on the specific setting in the Modem which should be 9600 generally. The SMS center number will be variable depends on the area. If the user uses SIM card of China Mobile, the center number will be +8613800200500. For more specific information please inquire the local mobile server.



A dialog box titled "System Setting..." with a close button (X) in the top right corner. It has five tabs: "Basic Setting", "BP Pager", "SMS", "E-mail", and "Alarm Definition". The "SMS" tab is selected. Inside the dialog, there is a checkbox labeled "Enable SMS warning" which is checked. Below it, a label "Send SMS by GSM Modem:" is followed by a group box containing three fields: "GSM MODEM connected to:" with a dropdown menu showing "COM3", "Baud Rate:" with the text "9600", and "SMS Center:" with the text "+8613800200500". Below this group box is a label "List of the warning receiver" followed by a table with three columns: "Receiver Name", "Telephone N...", and "Description". The table is empty. At the bottom of the dialog, there are three buttons: "Modify", "Delete", and "Add". At the very bottom, there are three buttons: "Reset", "OK", and "Cancel".

Receiver Name	Telephone N...	Description



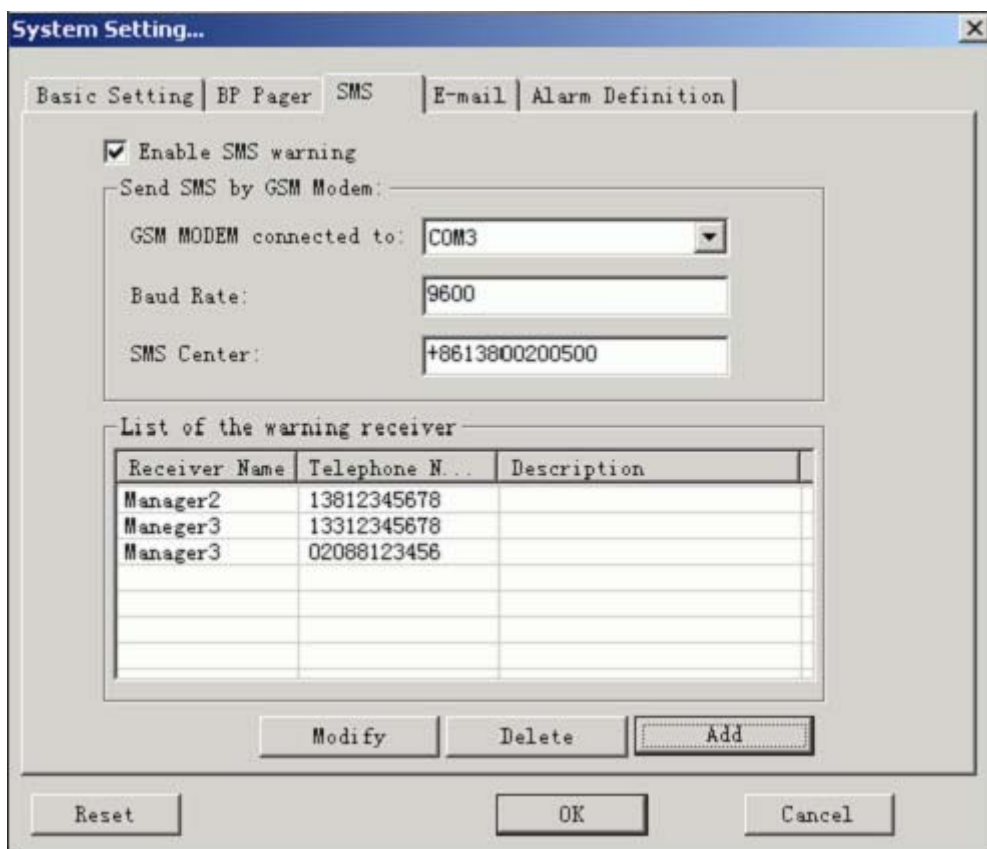
Add warning receiver

Receiver name:

Telephone number:

Description:

SMS warning function supports multi-receivers. It supports mobile receiving signal of China Mobile, China Unicom and China Telecom PAS.



System Setting...

Basic Setting | BP Pager | **SMS** | E-mail | Alarm Definition

☒ Enable SMS warning

Send SMS by GSM Modem:

GSM MODEM connected to:

Baud Rate:

SMS Center:

List of the warning receiver

Receiver Name	Telephone N...	Description
Manager2	13812345678	
Maneger3	13312345678	
Manager3	02088123456	

5.1.4 E-mail.

Activate the e-mail warning function for using e-mail. For SMTP address you can input IP address or domain name, the sender's address, user name and password. For example SMTP address: smtp.richcomm.com, Sender's address: server@powershield.com, User name: server, Password: xxxxxxxx.

System Setting...

Basic Setting | BP Pager | SMS | **E-mail** | Alarm Definition

☒ Enable E-mail warning

SMTP Server:

Send Email Address:

☐ SMTP Authentication:

User Name:

Password:

List of the warning receiver

Receiver Name	E-mail address	Description

Modify Delete Add

Reset OK Cancel

5.1.5 Warning definition.

Warning definition is used for defining the warning level, warning voice broadcasting setting etc.

System Setting...

Basic Setting | BP Pager | SMS | **E-mail** | **Alarm Definition**

List of Warning

Device types:

Event name	Alarm times	Interval	Alarm Level
<input checked="" type="checkbox"/> Turn Off Alarm	1	1	severe alarm
<input checked="" type="checkbox"/> Testing In Progress	1	1	runing event
<input checked="" type="checkbox"/> UPS Failure Alarm	1	1	common alarm
<input checked="" type="checkbox"/> UPS Bypass	1	1	common alarm
<input checked="" type="checkbox"/> Battery Voltage Low	1	1	severe alarm
<input checked="" type="checkbox"/> AC Failure Alarm	1	1	severe alarm
<input checked="" type="checkbox"/> UPS Disconnect	1	1	common alarm
<input checked="" type="checkbox"/> Network Interruption	1	1	runing event
<input checked="" type="checkbox"/> Connection Passwo...	1	1	runing event
<input checked="" type="checkbox"/> Control defeat	1	1	runing event
<input checked="" type="checkbox"/> NetMate type unma	1	1	runing event

Modify

Reset OK Cancel

Double press the warning information to be modified. If an alarm needs to be continuously broadcast without the confirmation of the administrator, you can choose the option “warning until it’s canceled or confirmed” and set the interval time for voice broadcasting. You can also

customize the warning level, setting the computer to carry out external program when an alarm occurs or canceled.

Modify User Warning

Basic information

Event name: Alarm code (BP):

☒ Enable warning when alarmed

☐ continuous alarm until the alarm had been canceled or affirmed

Alarm times: alarm interval: minutes

Alarm Level:

☒ Execute external program:

☒ Give me some warning when alarm cancelled

Cancel alarm code (BP):

☒ Executing exterior progr:

Warning confirmation is set in the “event history” page in the device. If the warning is not canceled or confirmed you can confirm it by double press the button. The warning level above will be displayed by level in the SOC warning window.

IpPowerSE

System Setting Device Management View Control Record Help

History Event-->Guangzhou-->Sports center
Show all the records for the device (Current 1/1 Page 3 records in total)

Start: 2005-10-25 End: 2005-11-4 Gradin All Level Type: All Event Filter...

Device name	Event name	Event	Alarm time	Confir...	Confir...	Cos
Sports ce...	Network Normal	runing ..	2005-11-4 17:55:5			
Sports ce...	Network Interruption	runing ..	2005-11-4 17:54:34	N		
Sports ce...	Connection Password Error	runing ..	2005-11-4 17:25:45	N		

For device:Sports centerTo send on a modif...

Area Class

Status Curve List Information History Record History Event

Device name Device code Recent occur time Alarm description

Ready RichComm System Technologies, Inc 17:55:55

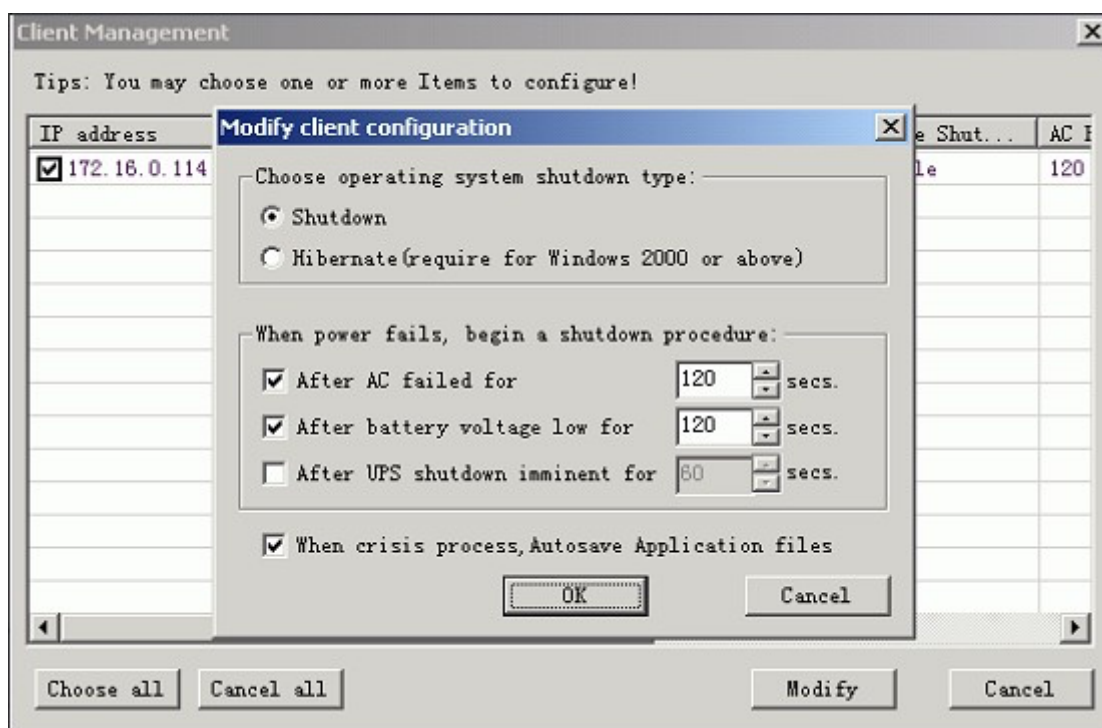
5.2 Crisis management

5.2.1 Client side crisis management

Client side crisis management is for managing the computer which has installed IpPowerSE software. After the client computer has installed IpPowerSE Client side software and authorized the management of the server, the page will be displayed after opening “Client side crisis

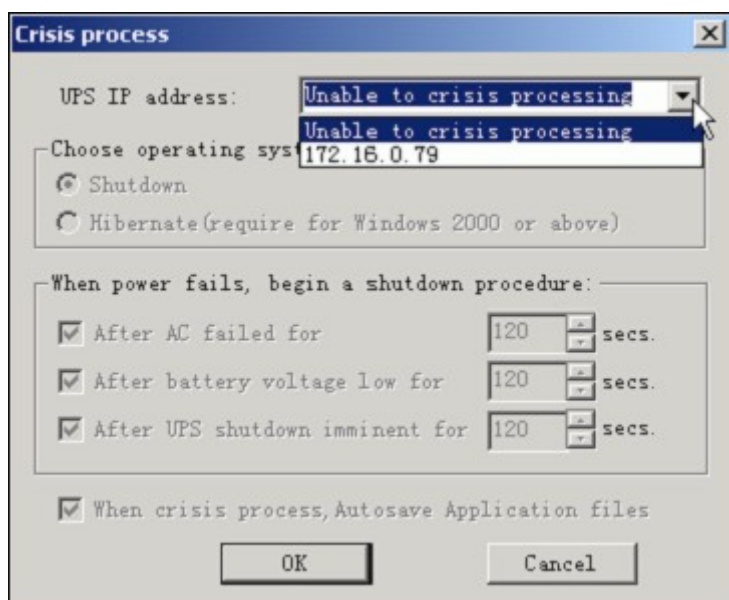
management” option.

If there are more than one computer you can choose one of them and press “modify”. The setting is for configuring the management in client side, but not for the same computer you are making the setting.

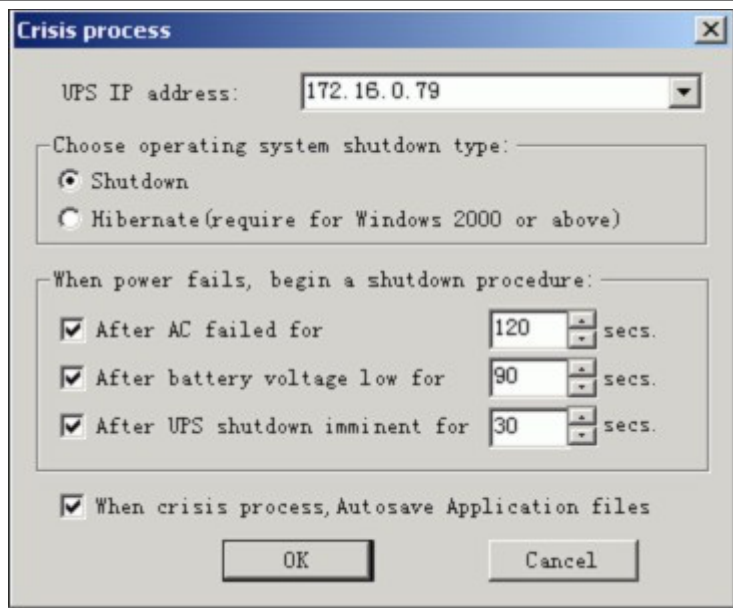


5.2.2 Server crisis management

Open the “Server crisis management” to select a certain UPS in the network to order the server to carry out the crisis management when alarmed.

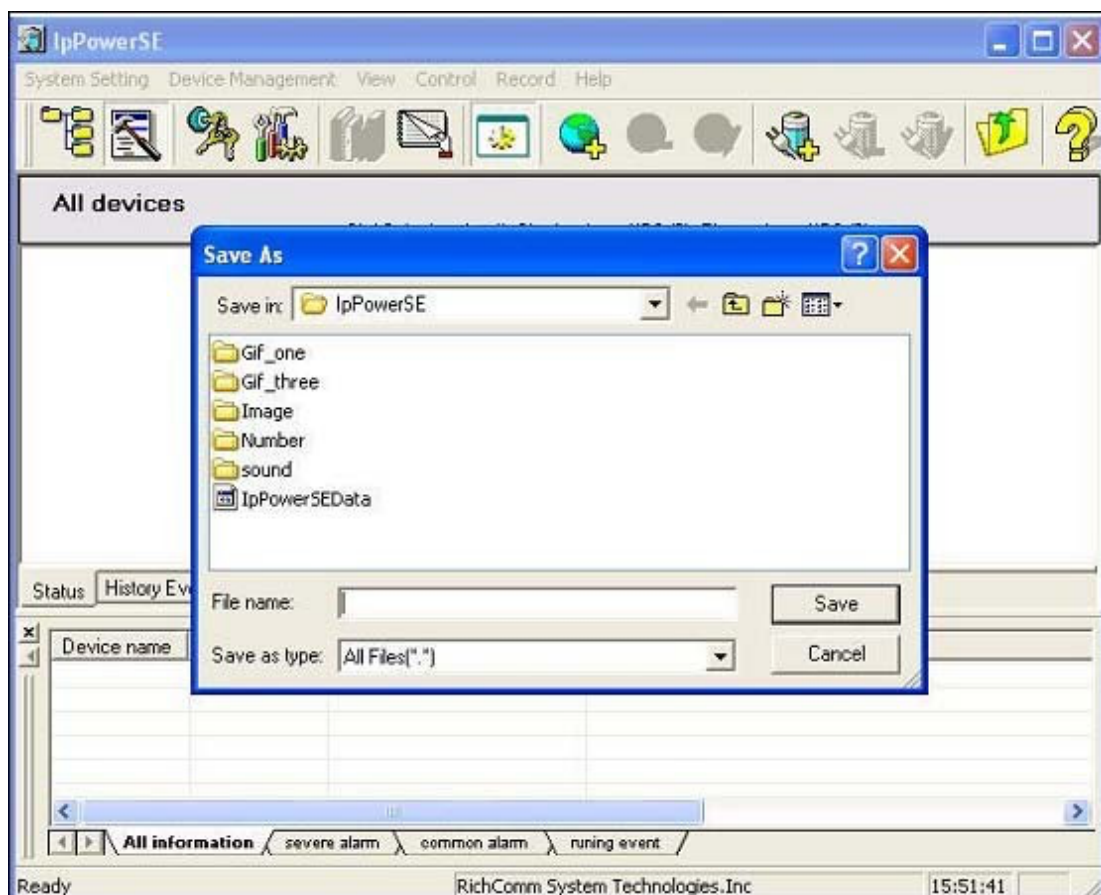


After selecting the UPS network card IP address (SNMP Lite IP address), you can set the crisis management for the server.



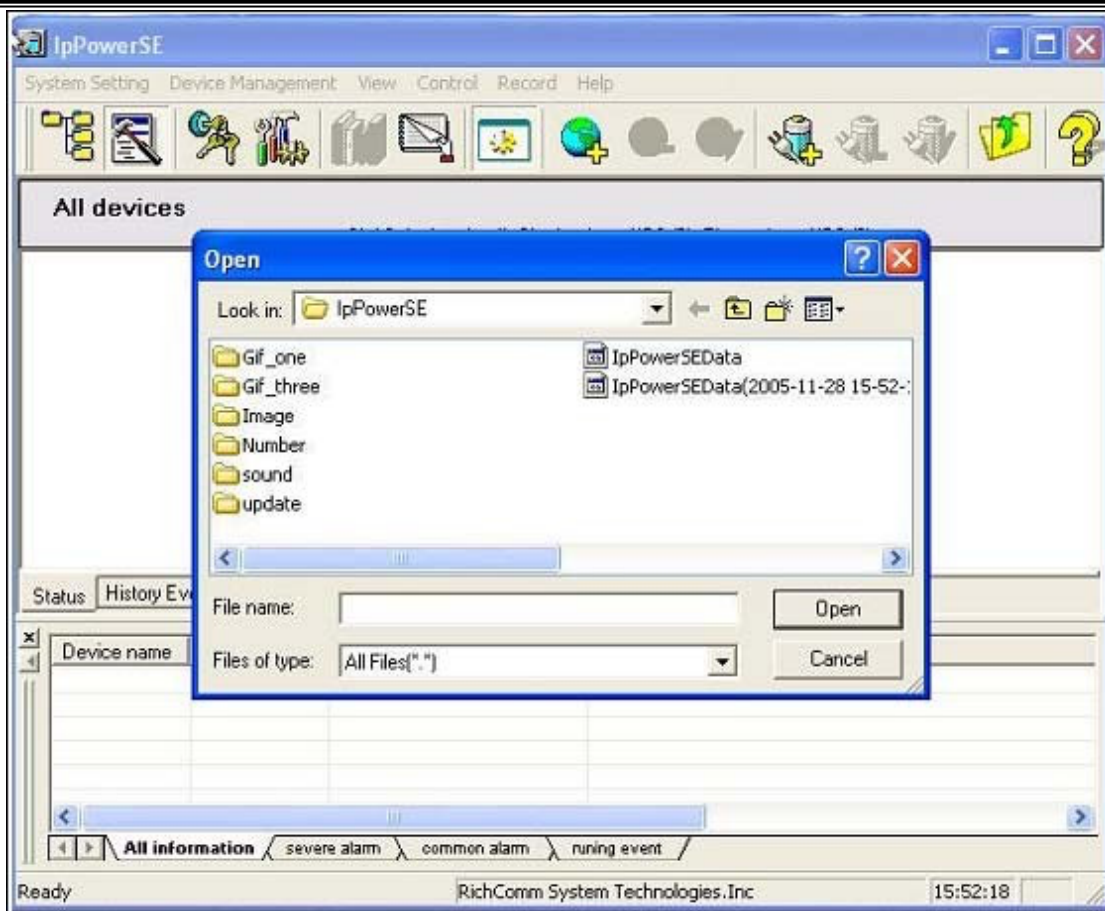
5.3 Data backup

IpPowerSE supports the data backup function. Users can easily backup their present database (devices, history events, history data, logs) and save as ACCESS database table. Easily for modifying, transferring and printing the data.



5.4 Recover Data

The system will confirm your exit when you choose the exit option. IpPowerSE has the data resume function which avoid the risk of the customer's incorrect operation to the database and any unexpected destroy to the database. The input data should be the database with backup. After the input, the database in use will auto insert a time format and backup after renamed. Notice: When the input database is too big, IpPowerSE will call for a little more time to renew the running. Please wait for the running.



5.5 Log out.

After logging out the system will resume to the initial status when logging in.

5.6 Modify password.

To modify the administrator log-in password.

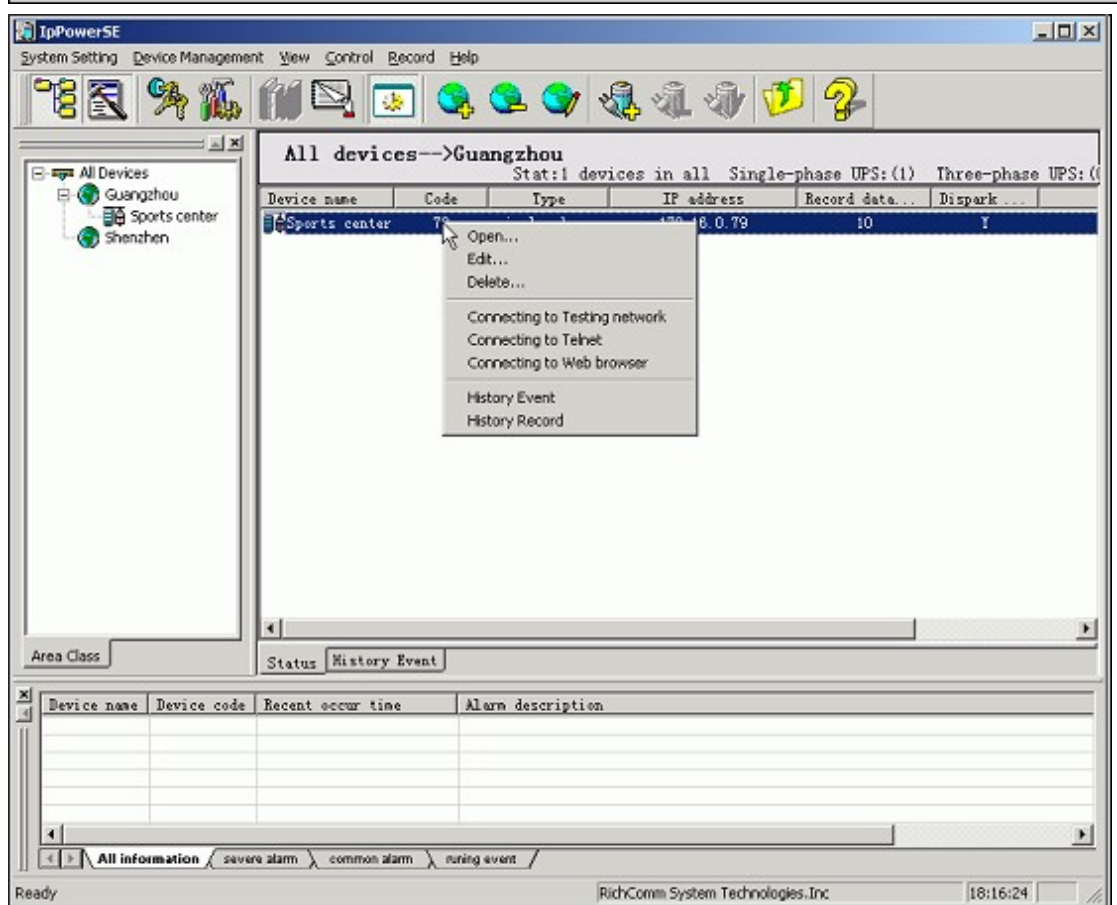
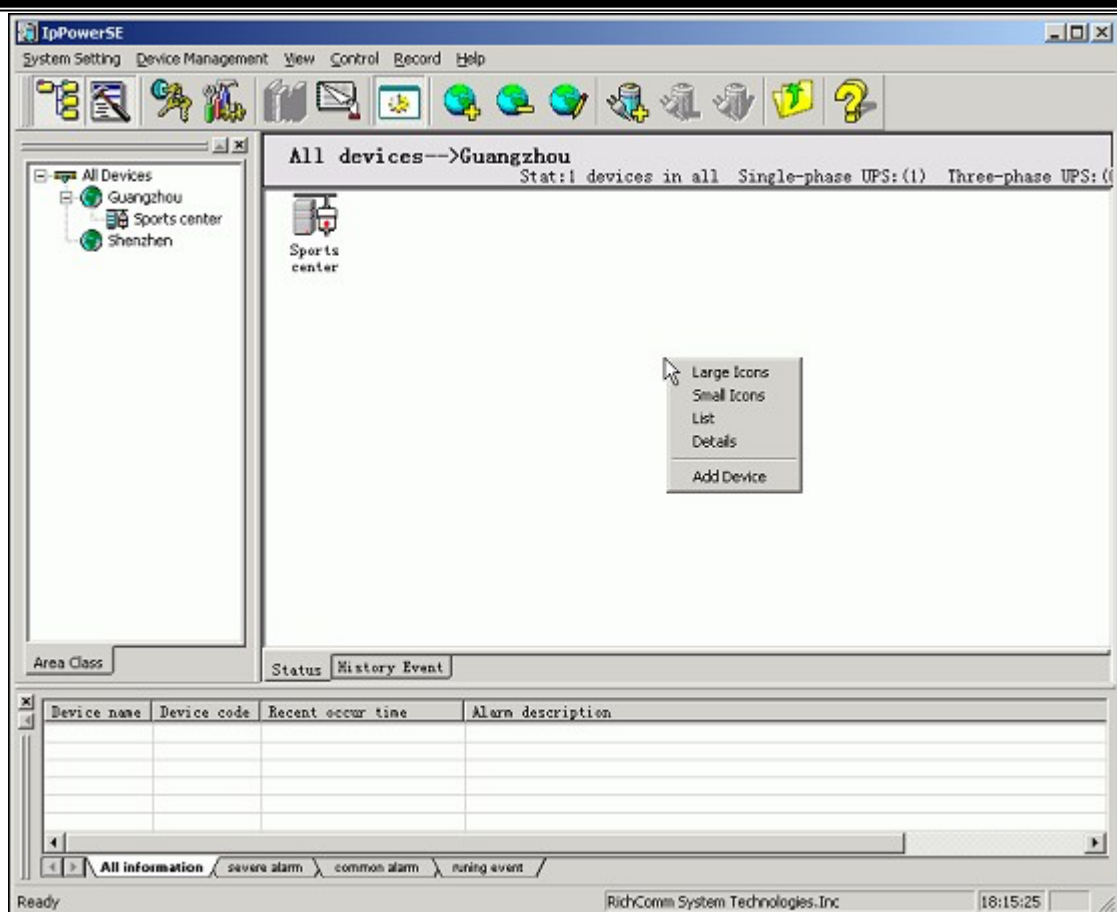
5.7 Exit.

6. “Device management” Menu

Device management function is for adding, modifying, deleting area and device. After installing IpPowerSE for the first time you can choose whether to add an area or device by “Device management” menu or the shortcut button in the shortcut toolbar.

In the Area status, the main window displays the status of all the devices in the area. Press the right button of the mouse in the blank of the window and choose to show the status of the devices in the area. Choose “Detailed information” to check the detailed information of all the devices.

IpPowerSE support to promptly view, log in and modify device in Area status. Choose the device and press the right button of the mouse. The menu will be displayed. Then you can choose to open and view the device status, edit and delete device, config the device IP and distant log in SNMP Lite card through Telnet and web page.



7. “View” Menu

View menu is for configuring IPPowerSE UI display status and device status view modes.

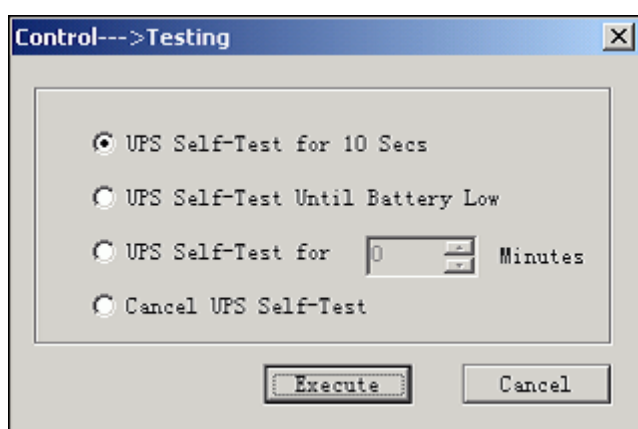
For example to set whether to show the toolbar, status bar, navigator bar and information bar on UI, or to view the device status chart, graph, list and attribute.

8. “Control” Menu

For the device that has set the control testing pop up menu you can only control the monitored device after you set the IpPower user authority in the SNMP Lite (NML) card and have the control right. For the configuration guide please refer to “SNMP Lite installation and configuration guide”.

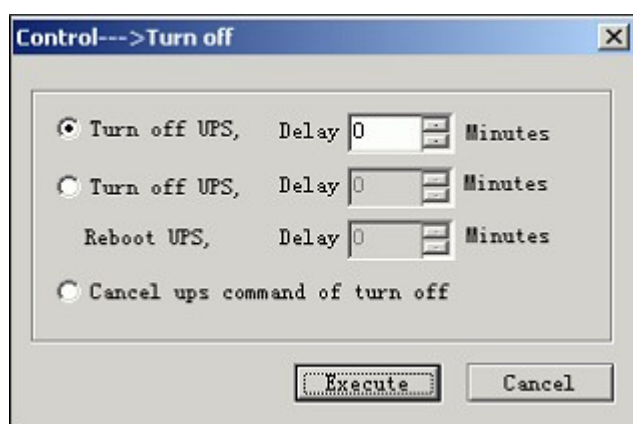
8.1 Control/Test.

Used for UPS self-test and canceling the test.



8.2 Turn on/turn off.

Used for turning on and turning off the UPS. You also need to set in SNMP Lite card (NML) and authorize the user for the control right.



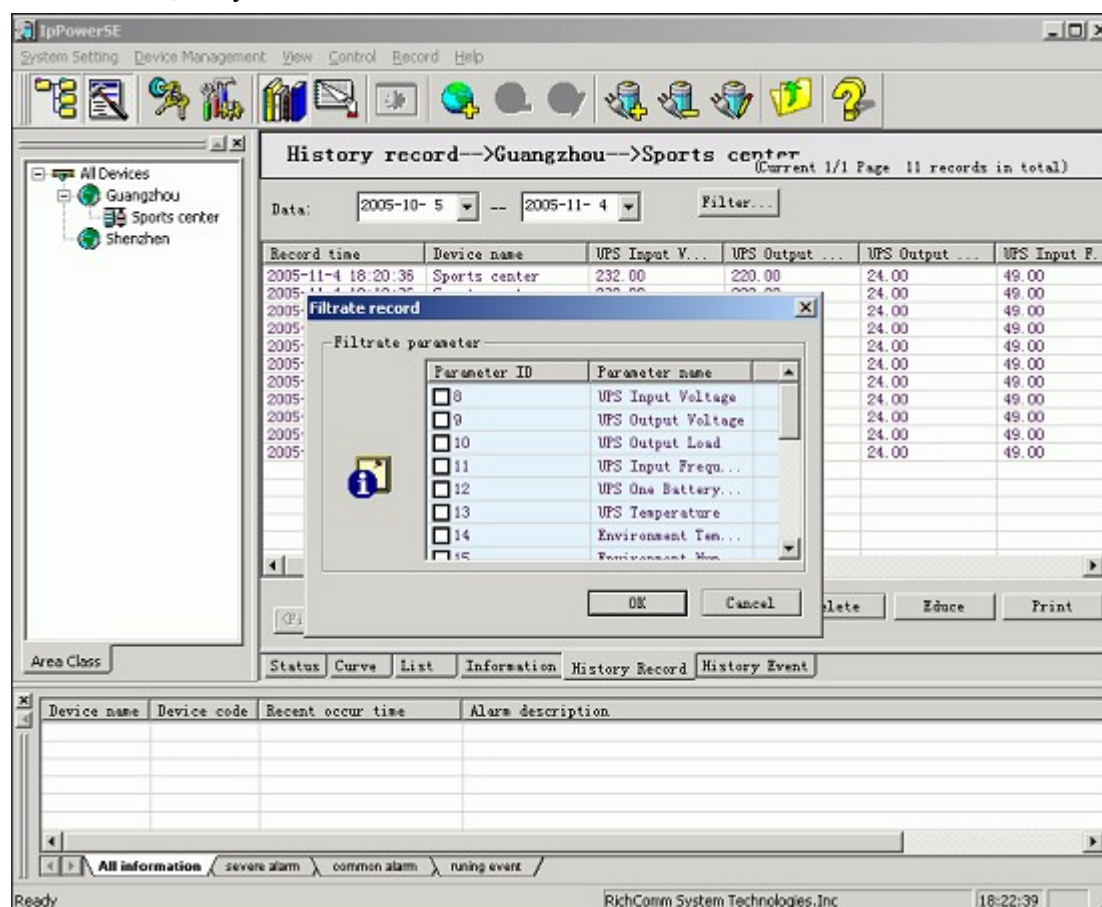
9. “Record” Menu

9.1 Check the history data, select the checking device and press “record” and “history data”. You may also select a single device and press “history data” with the right button on the mouse. The history data for the whole area can’t be checked at one time owing to the large data record.

IPPowerSE supports the time filter and parameter filter to history data. Users can inquire history data in different time period and filter the useless data.

To delete the data, follow the three ways below: delete record in a fixed period, delete record before a certain time or delete all the record.

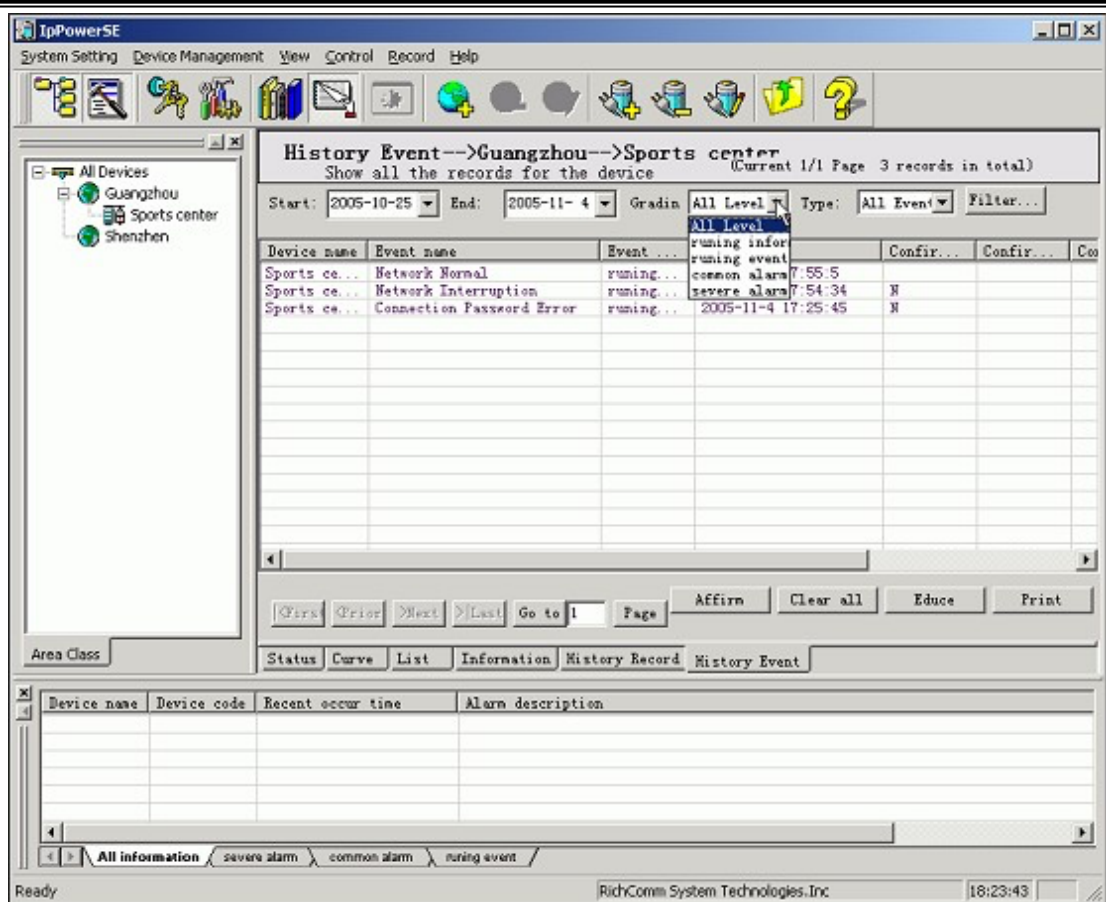
IpPowerSE supports output Excel table and print function, which is convenient for usersto handle, analysis and save record.



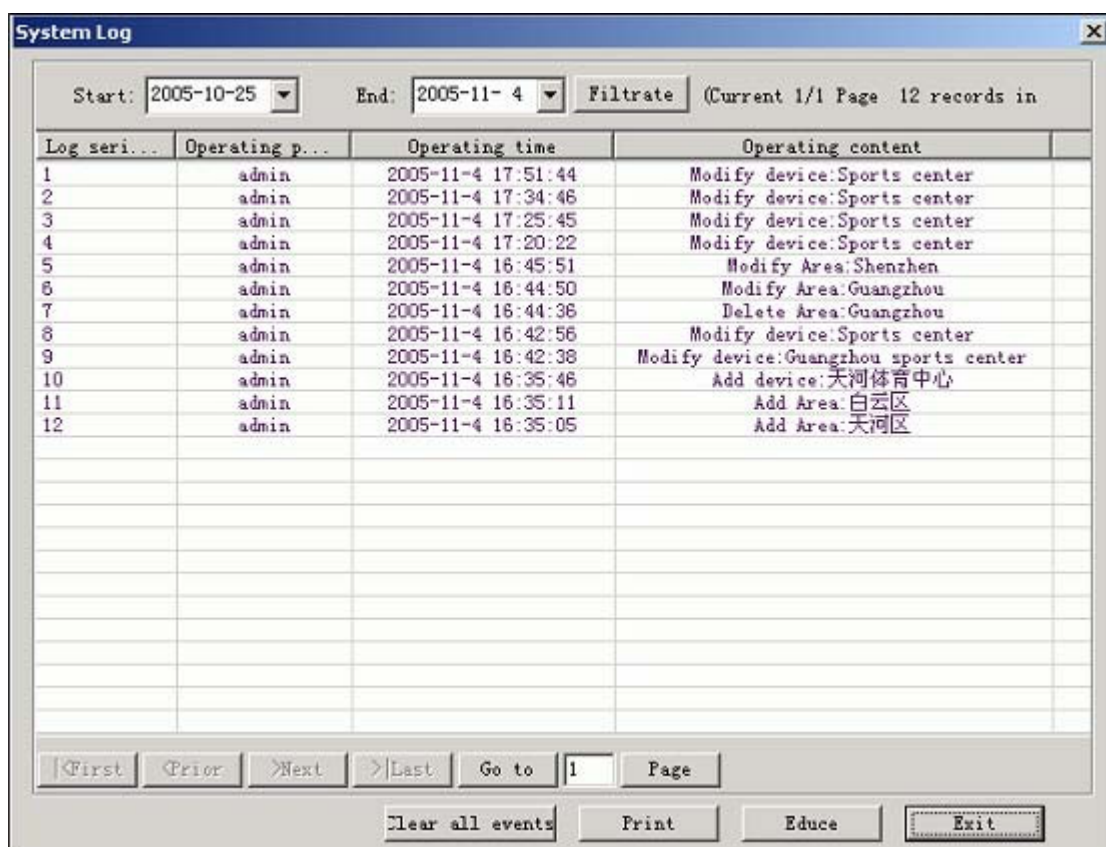
9.2 To check the history events, users may select either the whole area, a certain area or a certain device and press “View” and “History event” in the menu. It can be also checked by pressing “History event” in the area or device with right button on the mouse. The viewing filter conditions can be whether by time, alarm level or events type.

To select to clear all the history events will clear all the history events and renew the record.

History event also supports output Excel table and print function, which is convenient for users to handle, analysis and save record.

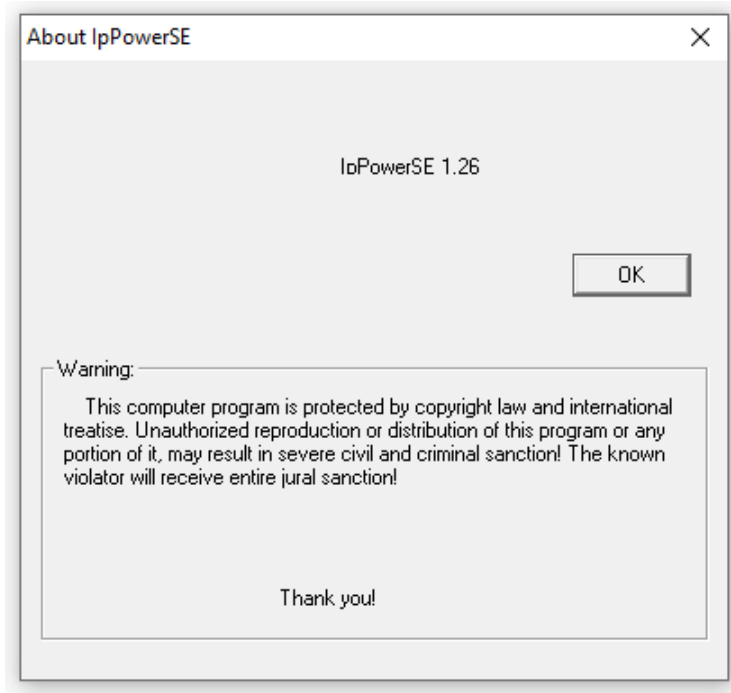


9.3 View system log. Users can view the user operation when logged in the monitoring system. It offers inquiry filter, information output in Excel and print functions.

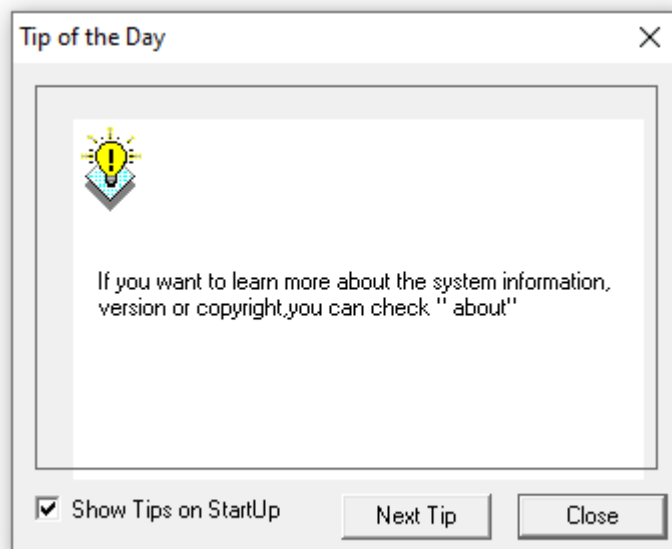


10. “Help”Menu

10.1 “About IpPowerSE” is for viewing the Release version.



10.2 “Help for today” is for offering some help and hints for user operation. It defaults to pop-up after the first installation and can be neglected by deleting “display help when started” and log in system directly.



10.3 “System help”. If it is functional please enter the Help file for more direction.